

# NUDO®

Laminated Panels With A Purpose



## UTILITE™

### INTERLOCKING WALL & CEILING PANELS

Utilite panels are easy to install, and the interlocking nature of the panels offers a near seamless appearance that is easy to clean. These versatile panels can be installed quickly, both vertically or horizontally, directly to studs or substrate. Utilite provides an effective option when building clean rooms at a very attractive price point.

- 100% moisture resistant
- Will not corrode
- Ideal for high water exposure areas
- Clean, smooth, bright white surface
- Meets USDA, FDA requirements
- Class A fire-rated
- Interlocking panels
- Lightweight panels
- Ease of installation
- 92% light reflectivity

## POPULAR APPLICATIONS

Commercial Kitchens  
Dairy Facilities  
Exam Rooms  
Food Preparation Areas

Laboratories  
Healthcare Facilities  
Service Areas  
Locker Rooms

Car Wash Facilities  
Veterinary Clinics  
Pharmaceutical Plants  
Clean Rooms

Restrooms  
Marine Facilities  
Food Processing Plants  
Grow Rooms

# PHYSICAL CHARACTERISTICS & PROPERTIES

## Standard Sizes

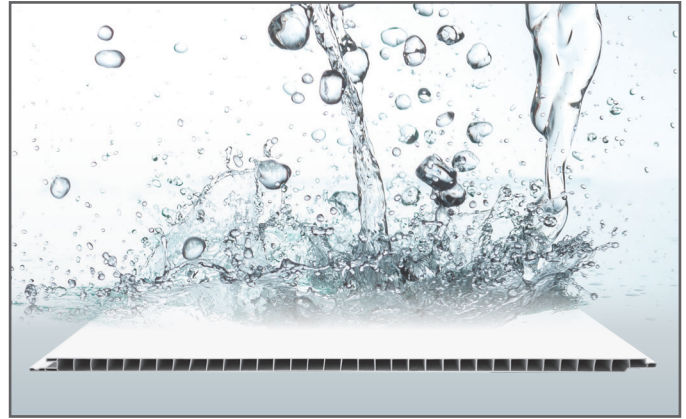
16" x 8'    24" x 8'  
 16" x 10'    24" x 10'  
 16" x 12'    24" x 12'  
 16" x 16'    24" x 16'  
 16" x 20'    24" x 20'

## Drop-In Ceiling Sizes

2' x 2'    2' x 4'  
 0.350" Nominal Thickness

**Fire-Rating:** Class A

**Nominal Thickness:** 0.40"



## Certifications

Meets LA County Requirements for walls and ceilings  
 Meets USDA Requirements for walls and ceilings  
 Meets FDA Requirements for walls and ceilings  
 CFIA - ULCS 102.2 - Class A

## Warranty

UtiLite interlocking liner panels are covered under a limited warranty for a period of two (2) years from date of original purchase.



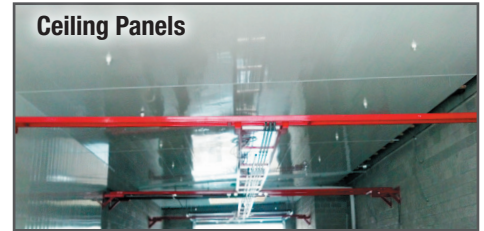
Interlocking Panels



Drop-In-Ceiling Panel

## Physical Properties

Typical Value	Unit	Test	Method Property
Surface Burn Test	Class A	NFPA / IBC	ASTM E84
Flexural Strength	2,233	lbf / in <sup>2</sup>	ASTM C393
Flexural Modulus	156,976	psi	ASTM C393
Flexural Load	10,496	psi	ASTM D3043
Tensile Strength	1,308	psi	ASTM D638
Izod Impact	1.57	ft-lbs / in	ASTM D256



Ceiling Panels

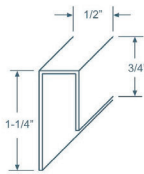
V-9-Division Bar

V-15-Outside Corner

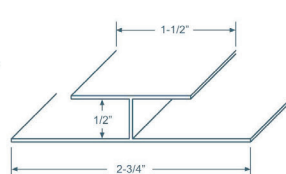
V-19-Edge Cap

V-21-Inside Corner

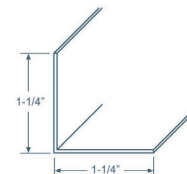
CS-125-Counter Sinking Screw



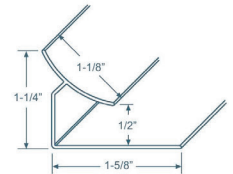
Edge Cap



Division Bar



Outside Corner



Inside Corner

# NUDO<sup>®</sup>

A VERZATEC COMPANY

1500 Taylor Avenue    Ph: 800.826.4132  
 Springfield, IL 62703    Fax: 217.528.8722  
 www.Nudo.com

Form 1002.L.Rev1.2019

**Visit [www.Nudo.com](http://www.Nudo.com) or  
 contact our local dealer for details.**